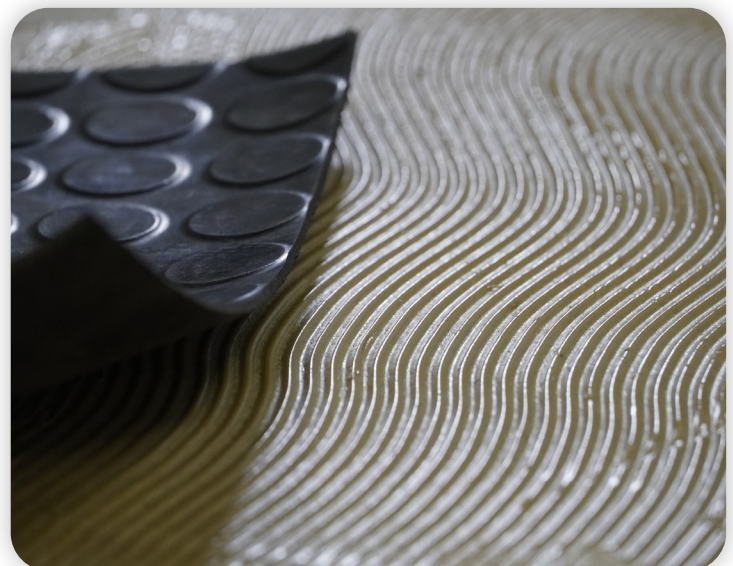
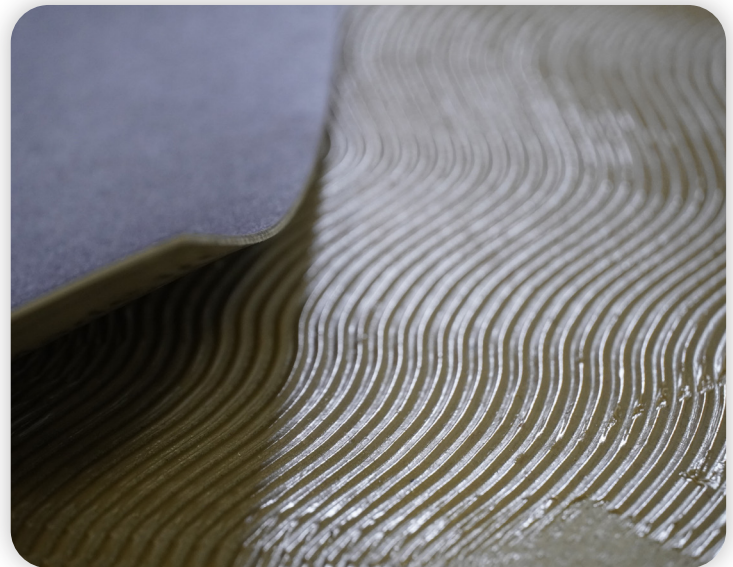







Lechner

SOLUTIONS FOR PROFESSIONAL CONSTRUCTION



FIELDS OF APPLICATION

-  RESILIENT LINE
-  WOOD LINE
-  MARINE LINE
-  ARTIFICIAL GRASS LINE
-  EQUIPMENT AND ACCESSORIES LINE

MASTIPREN TAPE

DOUBLE-SIDED FIBER-REINFORCED TAPE

DESCRIPTION AND USES

PRODUCT FOR PROFESSIONAL USE ONLY

Double-sided fiber-reinforced tape suitable for the indoor installation of:

- baseboard, rubber or PVC profiles, or skirting;
- corners, stair nosing or corner protectors;
- resilient and textile flooring on steps, curved surfaces and anywhere immediate grip is required.

MASTIPREN TAPE can be used on: cementitious substrates, existing ceramic flooring, stone materials, wooden substrates, existing paints, wallpaper, or fiberglass fabrics.

MASTIPREN TAPE is available in rolls at a height of 35 mm, 65 mm, 85 mm and 240 mm.

Thanks to its immediate and effective grip, its ease of application and the fact it is odorless, it is suitable for use in a wide variety of shipbuilding situations.

PRODUCT FEATURES



Suitable for indoor use

Waiting time

immediate gluing

Laying time

immediate

Dry-to-walk-on time

immediate

Final setting time

immediate



Appearance

Double-sided fiber-reinforced tape



Storage

24 months



Operating temperature

+10 - +35 °C

METHOD OF USE

The substrate must be compact, in good condition, clean, established, permanently dry and free from detaching substances such as oils, waxes, excess dust, etc. Porous or absorbent cementitious substrates should be primed in advance with an even coat of PRIMER 99, diluted in a ratio of 1:2 with clean water; the MASTIPREN TAPE can be applied after about 30 minutes. As MASTIPREN TAPE is highly adhesive, once the flooring has been glued, it cannot be adjusted; meaning any installation errors cannot be corrected.

Laying on steps:

1. cut the MASTIPREN TAPE according to the length of the steps;
2. place the band on the riser of the first step, and press while massaging. At this point, bend the band over the tread;
3. place a new band of MASTIPREN TAPE on the flat part of the step, without overlapping the previous one, but making sure they match. Follow this method for the rest of the staircase;
4. cut the flooring to the desired size before gluing;
5. remove the MASTIPREN TAPE paper from the riser of the step and proceed with the laying of the coating, massaging with a suitable spatula, from the center outwards;
6. remove the protective paper from the step tread and proceed as above; massaging is recommended to ensure a perfect adhesion to the substrate.

Laying skirting, profiles and undercoving:

- apply the MASTIPREN TAPE on the wall or on the surface to be covered with the profile using a trowel; when laying coving or similar, apply MASTIPREN TAPE both on the wall and on the floor, remove the protective paper and then proceed with the installation.

OTHER INFORMATION

The application and gluing times indicated in the product features correspond to an ambient

temperature of +20°C and a relative air humidity of 50%. The product and the flooring should be stored in the conditions of the desired rooms.

Packaging:

Height: 35 mm; length: 50 linear meters

Height: 65 mm; length: 50 linear meters

Height: 85 mm; length: 50 linear meters

Height: 240 mm; length: 50 linear meters

INSTRUCTIONS

FOR SAFETY AND DISPOSAL: Consult the relevant safety data sheet before using the product. Gloves are recommended during use. Ventilate the room during and after use. Follow all applicable safety regulations. Do not dispose of any residue in the ground, waterways or drains. To dispose of the product and other waste deriving from the activity, adhere closely to the provisions of Legislative Decree no. 152/2006 and subsequent amendments and additions of the Consolidated Environmental Act (Testo Unico Ambientale). For further information, please contact our Technical Assistance Department. The content of this sheet integrates and replaces the previous version, rendering it null and void.

WARNINGS: The data provided in this data sheet reflects our best theoretical and practical knowledge. However, it is not possible for us to consider every detail, therefore this information should not be considered as binding. In the event of any doubt, please contact our technical offices.