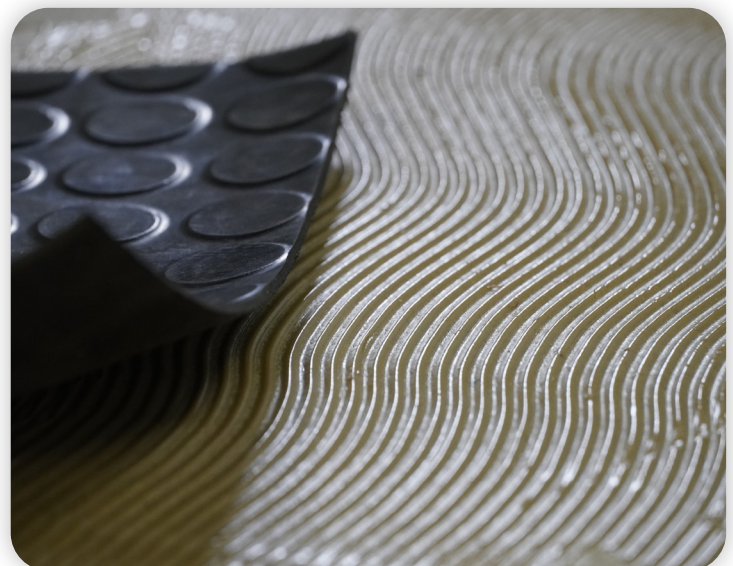
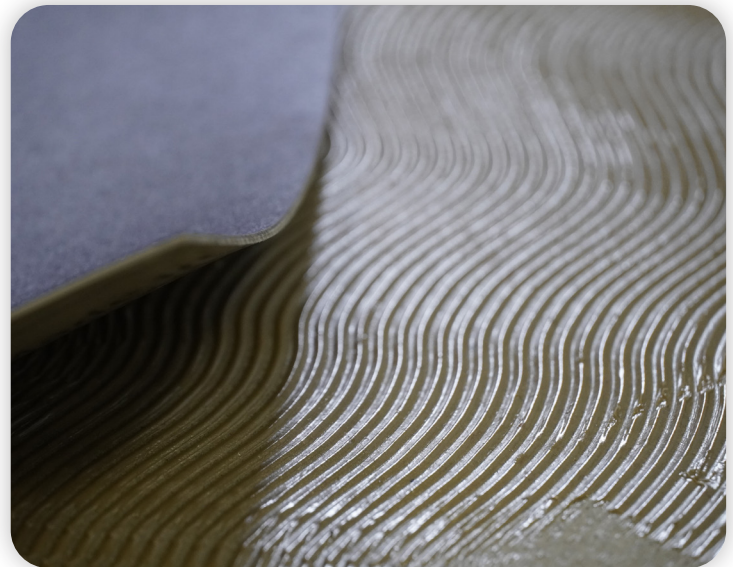







Lechner

SOLUTIONS FOR PROFESSIONAL CONSTRUCTION



FIELDS OF APPLICATION

-  RESILIENT LINE
-  WOOD LINE
-  MARINE LINE
-  ARTIFICIAL GRASS LINE
-  EQUIPMENT AND ACCESSORIES LINE

HYCOL NB R20

DOUBLE COATED UNIVERSAL ADHESIVE

DESCRIPTION AND USES PRODUCT FOR PROFESSIONAL USE ONLY

Polychloroprene-based double coating solvent adhesive, suitable for gluing baseboards, plastic laminates, various profiles, steps, PVC flooring and wall coverings, carpets, linoleum, rubber, cork, in sheets or tiles, on absorbent or non-absorbent surfaces.

PRODUCT FEATURES



Application

Lechner toothed trowel no. 1



Double coating



Suitable for indoor use



Suitable for under-floor heating systems



Suitable for wheelchairs

Waiting time

15-20 minutes

Open time

40 minutes

Dry-to-walk-on time

immediate

Final setting time

48 hours



Appearance

Paste



Color

Yellow



Chemical base

Polychloroprene in solvent



Warehousing

12 months in original sealed packaging



Consumption

150g/m² per coating



Operating temperature

+10 - +30 °C



Cleaning

Solvent CH 500 (as long as the product is fresh)



Mix before use

METHOD OF USE

The substrate must be compact, in good condition, established, permanently dry and free from detaching substances such as oils, waxes, excess dust, etc. Maximum allowable moisture content:

- Cementitious substrates: max. 2.0%; with underfloor heating 1.7%.
- Gypsum or anhydrite substrates: max. 0.5%; with underfloor heating 0.2%.

It is recommended to check that there is no rising moisture, in which case it is not possible to install. Substrates with an insufficiently flat or uneven laying surface can be leveled with cement-based leveling compounds, such as LIVELLANTE 140M, ULTRADUR, RASODUR, LEVELFAST, LEVELFAST S or RASODUR MAXI. Mix the product before use. Use a small-toothed trowel to apply the adhesive on the substrate and on the back of the material to be laid, taking care to incorporate any residual surface dust. Wait 15-20 minutes to allow the solvents to evaporate, then, once both surfaces are completely dry, press the surface to ensure full contact with the adhesive layer while gluing. Once the materials have been glued, the installation cannot be altered. A few hours before gluing, remove the wall covering from its packaging, laying it on the floor to reduce its tension and allow it to acclimatize to the working environment. Avoid exposure to excessively high temperatures.

OTHER INFORMATION

The application and gluing times indicated in the product features correspond to an ambient temperature of +20°C and a relative air humidity of 50%. The product and the flooring should be stored in the conditions of the desired rooms. It is always recommended to carry out compatibility and accelerated aging tests with the materials to be laid, especially if they are particularly thin, light-colored or new, in order to avoid the spread of dyes or plasticizers contained within the flooring. The fixed floors can only be welded after 24 hours.

INSTRUCTIONS

FOR SAFETY AND DISPOSAL: Consult the relevant safety data sheet before using the product. Gloves

are recommended during use. Ventilate the room during and after use. Follow all applicable safety regulations. Do not dispose of any residue in the ground, waterways or drains. To dispose of the product and other waste deriving from the activity, adhere closely to the provisions of Legislative Decree no. 152/2006 and subsequent amendments and additions of the Consolidated Environmental Act (Testo Unico Ambientale). For further information, please contact our Technical Assistance Department. The content of this sheet integrates and replaces the previous version, rendering it null and void.

WARNINGS: The data provided in this data sheet reflects our best theoretical and practical knowledge. However, it is not possible for us to consider every detail, therefore this information should not be considered as binding. In the event of any doubt, please contact our technical offices.