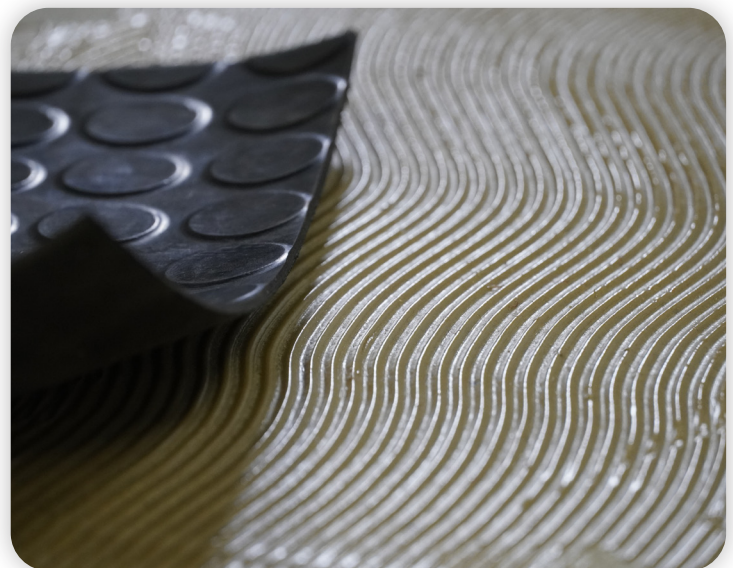
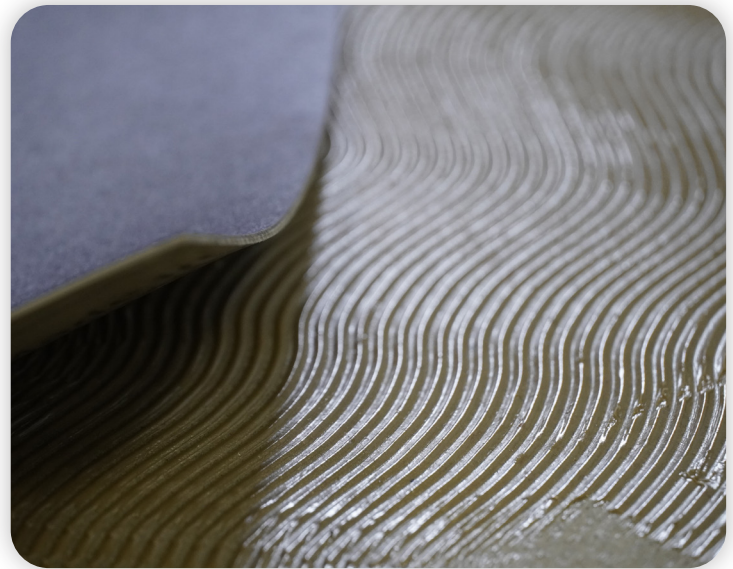







Lechner

SOLUTIONS FOR PROFESSIONAL CONSTRUCTION



FIELDS OF APPLICATION

-  RESILIENT LINE
-  WOOD LINE
-  MARINE LINE
-  ARTIFICIAL GRASS LINE
-  EQUIPMENT AND ACCESSORIES LINE

HYCOL KD ECO

HIGH-PERFORMANCE UNIVERSAL ACRYLIC ADHESIVE FOR INSTALLING RESILIENT AND RUBBER FLOORING

DESCRIPTION AND USES PRODUCT FOR PROFESSIONAL USE ONLY

High-performance universal acrylic adhesive in aqueous emulsion, suitable for installing homogeneous and heterogeneous PVC flooring in sheets and tiles, rubber civil flooring in sheets up to 3 mm or in tiles up to 2.5 mm, semi-flexible vinyl, vinyl on foam, textiles, cork supported on PVC, and on absorbent or poorly absorbent substrates. HYCOL KD ECO is a very low VOC content product and is certified EC1 Plus by the German Association for the Control of Emissions in Products for Flooring Installation, Adhesives and Building Materials (GEV). HYCOL KD ECO also contributes towards the Indoor Environmental Quality (EQ) Credit assessment: Low-Emitting Materials for LEED (Leadership in Energy and Environmental Design).

PRODUCT FEATURES



Application

Lechner toothed trowel no.1 - 2



Suitable for indoor use



Suitable for under-floor heating systems



Suitable for wheelchairs

Waiting time

10 to 30 mins depending on the absorbency of the substrate



Open time

40 minutes

Dry-to-walk-on time

5 hours

Final setting time

24-48hours



Appearance

Paste



Color

White



Chemical base

Acrylic resin in aqueous emulsion



Storage

12 months in original sealed packaging



Consumption

300-400 g/m²



Operating temperature

+10 - +30 °C



Cleaning

Water (as long as the product is fresh)



Susceptible to frost

CERTIFICATIONS



Product with low volatile organic compounds (VOC) content, certified by the German Association for the Control of Emissions in Products for Flooring Installation, Adhesives and Building Materials (GEV)



Product with very low VOC content according to French regulation

METHOD OF USE

The substrate must be absorbent, compact, in good condition, established, permanently dry and free from detaching substances such as oils, waxes, excess dust, etc. If there are any cracks or fissures, these must be first repaired with SIGEPOX. Maximum allowable moisture content:

- Concrete substrates: max. 2.0%; with underfloor heating 1.7%.
- Gypsum or anhydrite substrates: max. 0.5%; with underfloor heating 0.2%.

If surfaces are dusty, insufficiently compact or highly absorbent, they should be treated in advance with the appropriate primers, such as PRIMER 99 or PRIMER AC PLUS. An insufficiently flat or uneven laying surface can be leveled with cement-based leveling compounds, such as LIVELLANTE 140M, RASODUR MAXI, ULTRADUR, RASODUR, LEVELFAST or LEVELFAST S after priming the surface with PRIMER 99 or PRIMER AC PLUS for absorbent substrates, and ECOGRIP or ECOGRIP PLUS for poorly or non-absorbent substrates. Non-heating substrates with excessive humidity (max. 5%) must be first waterproofed with appropriate primers such as: PU series, EPOPRIMER or TRIX, depending on the absorbency of the surface, sandblasted and then smoothed. Heating substrates can be reinforced but not waterproofed (contact the Technical Department for more information). Do not install on surfaces that are not insulated from rising damp.

Installing on absorbent substrates: apply the adhesive on the substrate using an appropriately sized notched trowel, incorporating any residual surface dust. Wait for the adhesive to partially dry, at least around 10 minutes, depending on the quantity applied and the absorbency of the substrate, and then glue the sheets or tiles onto the adhesive, which must still be able to wet the back of the flooring. Apply even pressure over the entire surface of the flooring to ensure full contact with the adhesive, massaging from the center outward to improve adhesion and to remove any air bubbles.

Installing on poorly absorbent substrates: apply the adhesive on the substrate, then wait about 30 minutes to allow the water to partially evaporate, which will ensure that the adhesive can transfer to the reverse side of the material to be glued, and then proceed as for absorbent substrates.

OTHER INFORMATION

A few hours before installation, remove the flooring to be glued from its packaging, laying it on the floor to reduce tension and allow it to acclimatize to the working environment. The application and gluing times indicated in the product features correspond to an ambient temperature of +20°C and a relative air humidity of 50%. Store the product at the temperatures of the desired rooms and avoid exposure to excessively high and low temperatures.

INSTRUCTIONS

FOR SAFETY AND DISPOSAL: Consult the relevant safety data sheet before using the product. Gloves are recommended during use. Ventilate the room during and after use. Follow all applicable safety regulations. Do not dispose of any residue in the ground, waterways or drains. To dispose of the product and other waste deriving from the activity, adhere closely to the provisions of Legislative Decree no. 152/2006 and subsequent amendments and additions of the Consolidated Environmental Act (Testo Unico Ambientale). For further information, please contact our Technical Assistance Department. The content of this sheet integrates and replaces the previous version, rendering it null and void.

WARNINGS: The data provided in this data sheet reflects our best theoretical and practical knowledge. However, it is not possible for us to consider every detail, therefore this information should not be considered as binding. In the event of any doubt, please contact our technical offices.