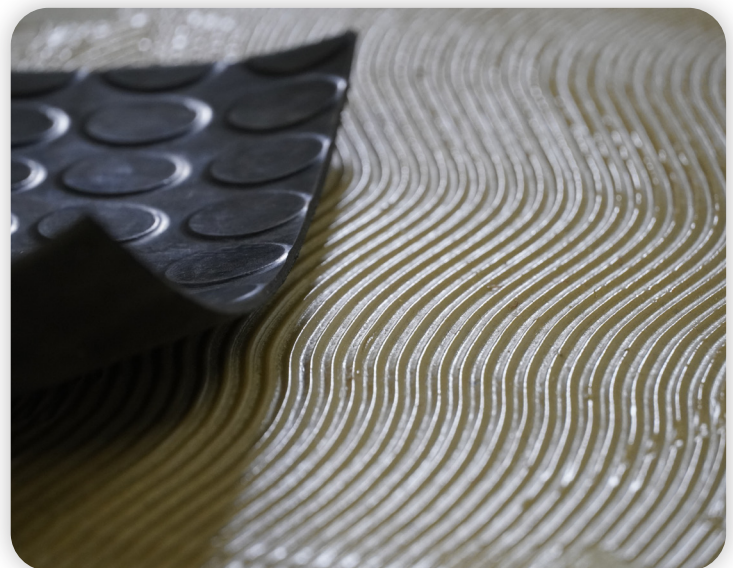
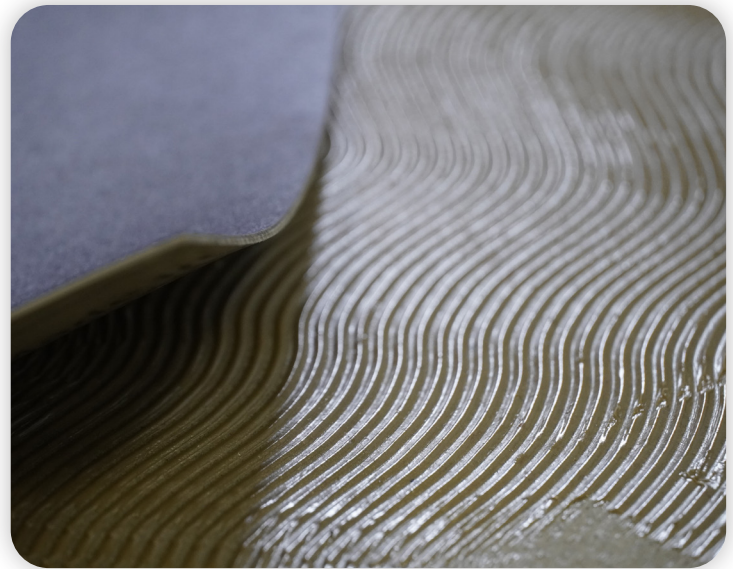







Lechner

SOLUTIONS FOR PROFESSIONAL CONSTRUCTION



FIELDS OF APPLICATION

-  RESILIENT LINE
-  WOOD LINE
-  NAVAL LINE
-  SYNTHETIC GRASS LINE
-  EQUIPMENT AND ACCESSORIES LINE

HYCOL KD 1

UNIVERSAL ACRYLIC ADHESIVE FOR INSTALLING RESILIENT CONDUCTIVE FLOORING

DESCRIPTION AND USES PRODUCT FOR PROFESSIONAL USE ONLY

Universal acrylic adhesive in aqueous dispersion, with a long open time, suitable for installing homogeneous and heterogeneous PVC flooring in sheets and tiles, rubber civil flooring in sheets up to 3 mm or in tiles up to 2.5 mm, textiles, semi-flexible vinyl, vinyl on foam, textiles, cork supported on PVC, and on absorbent substrates.

PRODUCT FEATURES



Application

Lechner toothed trowel no.1 - 2



Suitable for indoor use



Suitable for under-floor heating systems



Suitable for wheelchairs

Waiting time

10 to 30 mins depending on the absorbency of the substrate



Open time

50 minutes

Dry-to-walk-on time

6 hours

Final setting time



Appearance

Paste



Color

White



Chemical base

Acrylic resin in aqueous emulsion



Warehousing

12 months in original sealed packaging



Consumption

300-400g/m²



Operating temperature

+10 - +30 °C



Cleaning

Water (as long as the product is fresh)



Susceptible to frost

CERTIFICATIONS



Solvent-free product

METHOD OF USE

The substrate must be absorbent, flat, compact, in good condition, clean, established, permanently dry and free from detaching substances such as oils, waxes, excess dust, etc. If there are any cracks or fissures, these must be first repaired with SIGEPOX. Maximum allowable moisture content:

- Concrete substrates: max. 2.0%; with underfloor heating 1.7%.
- Gypsum or anhydrite substrates: max. 0.5%; with underfloor heating 0.2%.

It is recommended to check that there is no rising damp, in which case it is not possible to install.

If surfaces are excessively dusty, insufficiently compact or highly absorbent, they should be treated in advance with the appropriate primers: PRIMER AC PLUS or PRIMER 99. Absorbent substrates with an insufficiently flat or uneven laying surface can be leveled with cement-based leveling compounds, such as LIVELLANTE 140M, RASODUR MAXI, ULTRADUR, RASODUR, LEVELFAST S or LEVELFAST after priming the surface with PRIMER 99 to promote adhesion. Poorly or completely non-absorbent surfaces must always be smoothed to a minimum thickness of at least 2-3 mm, after applying ECOGRIP or ECOGRIP PLUS as an adhesion promoter. Anhydrite substrates should be treated according to the manufacturer's instructions. Non-heating substrates that still have an excessive degree of residual moisture (max. 5%) when the flooring is laid must be sealed with appropriate primers, such as: PU series, EPOPRIMER or TRIX, depending on the absorbency of the surface, sanded and then smoothed with a minimum thickness of at least 2-3 mm. In this case, it is necessary to spread plenty of dry siliceous sand of a suitable grain size (0.5-1 mm) on the last coat of waterproof treatment while it is still fresh, subsequently removing any excess sand not anchored after the primer has dried, to ensure good anchorage of the skim coat to the substrate. Heating substrates can be reinforced but not waterproofed. Mix the product before use. Apply the adhesive on the substrate using an appropriately sized notched trowel, incorporating any residual surface dust. Wait for the adhesive to partially dry, which should take about 10-30 minutes, depending on: the quantity applied, the absorbency of the substrate and the ambient temperature. Then proceed to glue the sheets or tiles onto the adhesive, which must still be able to wet the back of the flooring. Apply even pressure over the entire surface of the flooring to ensure full contact with the adhesive, massaging from the center outward to improve adhesion and to remove any air bubbles.

OTHER INFORMATION

A few hours before laying, remove the flooring to be glued from its packaging, laying it on the floor to reduce tensions and allow it to acclimatize to the working environment. The application and gluing times indicated in the product features correspond to an ambient temperature of +20°C and a relative air humidity of 50%. Store the product at the temperatures of the desired rooms and avoid exposure to excessively high and low temperatures.

INSTRUCTIONS

FOR SAFETY AND DISPOSAL: Consult the relevant safety data sheet before using the product. Gloves are recommended during use. Ventilate the room during and after use. Follow all applicable safety regulations. Do not dispose of any residue in the ground, waterways or drains. To dispose of the product and other waste deriving from the activity, adhere closely to the provisions of Legislative Decree no. 152/2006 and subsequent amendments and additions of the Consolidated Environmental Act (Testo Unico Ambientale). For further information, please contact our Technical Assistance Department. The content of this sheet integrates and replaces the previous version, rendering it null and void.

WARNINGS: The data provided in this data sheet reflects our best theoretical and practical knowledge. However, it is not possible for us to consider every detail, therefore this information should not be considered as binding. In the event of any doubt, please contact our technical offices.