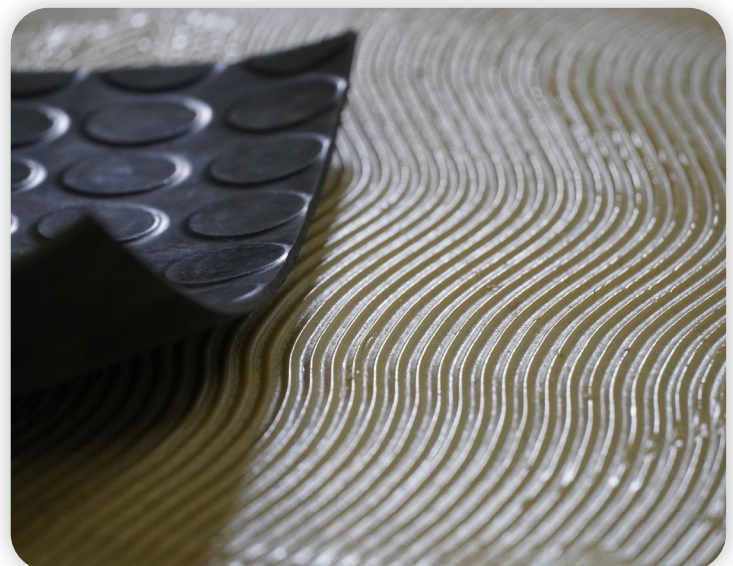
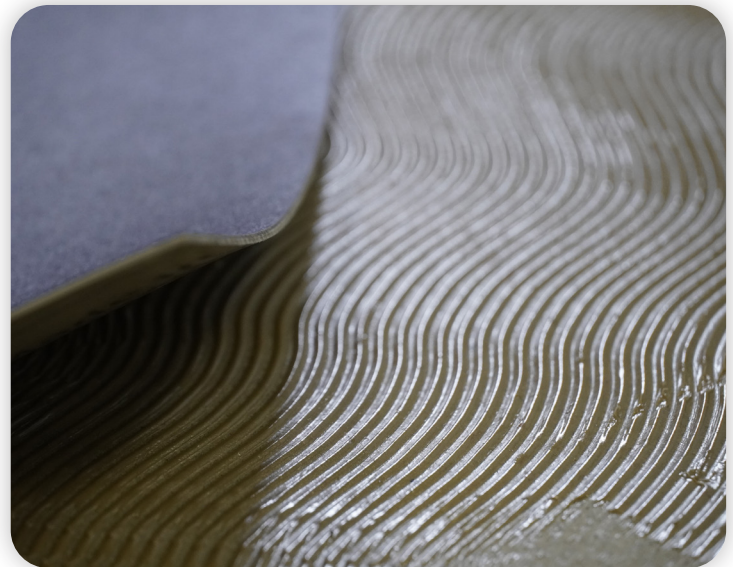









SOLUTIONS FOR PROFESSIONAL CONSTRUCTION



#### FIELDS OF APPLICATION

- |  |   |
|--|---|
|  RESILIENT LINE                  |  WOOD LINE             |
|  MARINE LINE                     |  ARTIFICIAL GRASS LINE |
|  EQUIPMENT AND ACCESSORIES LINE |   |

# HYCOL KD1 SPECIAL

UNIVERSAL ACRYLIC ADHESIVE FOR INSTALLING PVC AND RUBBER FLOORING

## DESCRIPTION AND USES

PRODUCT FOR PROFESSIONAL USE ONLY

Universal acrylic adhesive in aqueous dispersion, with high initial tack and long open time, suitable for installing homogeneous and heterogeneous PVC coatings, vinyl on foam, cork supported on PVC, textiles, rubber, LVT and PVC profiles on absorbent substrates. HYCOL KD1 SPECIAL is also suitable for installing rubber flooring.

## PRODUCT FEATURES



### Application

Lechner toothed trowel no.1- no.2



### Suitable for indoor use



### Waiting time

10 minutes

### Open time

50 minutes

### Final setting time

48-72 hours



### Appearance

Paste



### Color

White



### Chemical base

Acrylic resin in aqueous emulsion



### Storage

12 months in original sealed packaging



### Consumption

250-400 g/m<sup>2</sup>



### Operating temperature

+10 - +30 °C



### Cleaning

Water (as long as the product is fresh)



### Susceptible to frost

## CERTIFICATIONS



### Solvent-free product

## METHOD OF USE

The substrate must be absorbent, compact, in good condition, established, permanently dry and free from detaching substances such as oils, waxes, excess dust, etc.

Maximum allowable moisture content:

- Cementitious substrates: max. 2.0%; with underfloor heating 1.7%.
- Gypsum or anhydrite substrates: max. 0.5%; with underfloor heating 0.2%.

It is recommended to check that there is no rising damp, in which case it is not possible to install. If surfaces are very dusty, insufficiently compact or highly absorbent, they should be treated in advance with the appropriate primers, such as PRIMER 99 or PRIMER AC PLUS. Absorbent substrates with an insufficiently flat or uneven laying surface can be leveled with the appropriate skim coat after priming the surface with PRIMER 99 to promote adhesion. Non-absorbent substrates must be coated with a minimum thickness of 2 mm. Apply the adhesive on the substrate using an appropriately sized notched trowel, incorporating any residual surface dust. Wait for the adhesive to partially dry, which should take about 10 to 20 minutes, depending on: the quantity applied, the absorbency of the substrate and the ambient temperature. Then proceed to glue the sheets onto the adhesive, which must still be able to wet the back of the flooring. Apply even pressure over the entire surface of the flooring to ensure full contact with the adhesive, massaging from the center outward to improve adhesion and to remove any air bubbles.

## OTHER INFORMATION

A few hours before laying, remove the flooring to be glued from its packaging, laying it on the floor to reduce tensions and allow it to acclimatize to the working environment. The application and gluing times indicated in the product features correspond to an ambient temperature of +20°C and a relative air humidity of 50%. Store the product at the temperatures of the desired rooms and avoid exposure to excessively high and low temperatures.

## INSTRUCTIONS

**FOR SAFETY AND DISPOSAL:** Consult the relevant safety data sheet before using the product. Gloves are recommended during use. Ventilate the room during and after use. Follow all applicable safety regulations. Do not dispose of any residue in the ground, waterways or drains. To dispose of the product and other waste deriving from the activity, adhere closely to the provisions of Legislative Decree no. 152/2006 and subsequent amendments and additions of the Consolidated Environmental Act (Testo Unico Ambientale). For further information, please contact our Technical Assistance Department. The content of this sheet integrates and replaces the previous version, rendering it null and void.

**WARNINGS:** The data provided in this data sheet reflects our best theoretical and practical knowledge. However, it is not possible for us to consider every detail, therefore this information should not be considered as binding. In the event of any doubt, please contact our technical offices.