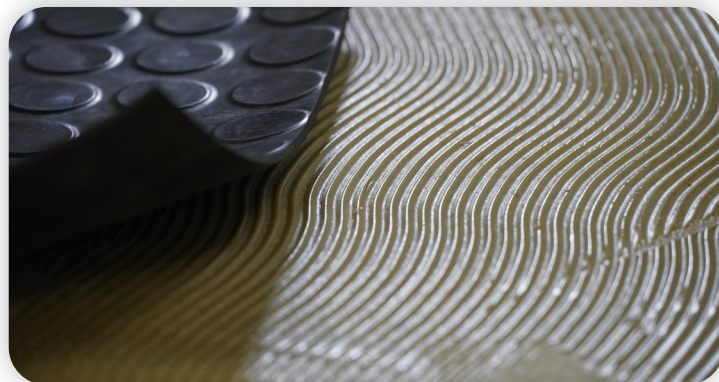
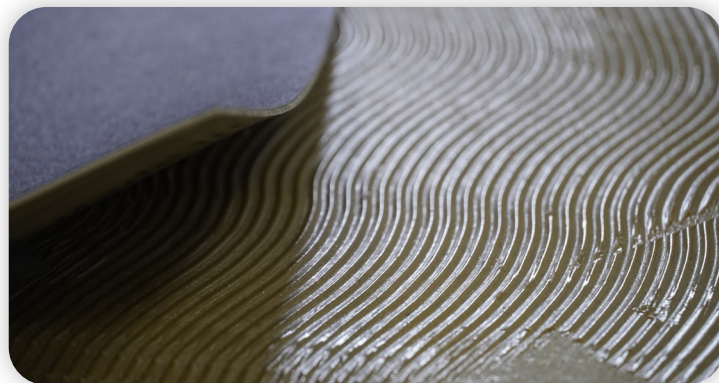




Lechner


SOLUTIONS FOR PROFESSIONAL CONSTRUCTION





FIELDS OF APPLICATION

- 

RESILIENT LINE
- 

WOOD LINE
- 

MARINE LINE
- 

ARTIFICIAL GRASS LINE
- 

EQUIPMENT AND ACCESSORIES LINE

GOMMAPUR

HYPOALLERGENIC AND ODORLESS TWO-COMPONENT POLYURETHANE ADHESIVE FOR INSTALLING RUBBER, PVC AND LVT FLOORING

DESCRIPTION AND USES

PRODUCT FOR PROFESSIONAL USE ONLY

Very high-performance hypoallergenic two-component polyurethane adhesive suitable for installing rubber flooring in civil and sports buildings, PVC and LVT flooring; particularly suitable when requiring a two-component adhesive that is odorless and has a low environmental impact, and for operators who are allergic to epoxy resins and amines. Suitable for gluing rubber sheets on UNDERLAY waterproofing sheathing. Suitable for indoor and outdoor use. GOMMAPUR is a product with a low VOC content and is classified in EC1 PLUS by the GEV. GOMMAPUR also contributes towards the Indoor Environmental Quality (EQ) Credit assessment: Low-Emitting Materials for LEED (Leadership in Energy and Environmental Design).

PRODUCT FEATURES



Application

Lechner toothed trowel no.1- 2- 4



Suitable for indoor use



Suitable for outdoor use



Suitable for under-floor heating systems



Suitable for wheelchairs



Catalysis ratio

8.7:1.3 (A:B)



Waiting time

10 minutes

Dry-to-walk-on time

12 hours

Final setting time

48-72 hours



Pot life

60 minutes



Storage

12 months in original sealed packaging



Chemical base

Polyurethane resin



Consumption

500-1,000 g/m²



Operating temperature

+10 - +30 °C



Cleaning

Solvent CH 500 (as long as the product is fresh)

CERTIFICATIONS



Product with very low VOC content, certified by the GEV



Product with very low VOC content according to French regulation

METHOD OF USE

The substrate must be in good condition, clean, established, permanently dry and free from detaching substances such as oils, waxes, excess dust, etc. If there are any cracks or fissures, these must be first repaired with SIGEPOX. Maximum allowable moisture content:

- Concrete substrates: max. 2.0%; with underfloor heating 1.7%.
- Gypsum or anhydrite substrates: max. 0.5%; with underfloor heating 0.2%.

It is recommended to check that there is no rising damp. Any excessively dusty or insufficiently compact surfaces should be treated in advance using appropriate primers, such as polyurethane primers (PU series) or EPOPRIMER. The surface of stone and non-absorbent surfaces such as ceramics should be treated with warm water and caustic soda, and then rinsed thoroughly. It is recommended to apply PROMOX on the cleaned and dried surface to improve adhesion. Substrates with an insufficiently flat laying surface can be leveled with cement-based leveling compounds, such as LIVELLANTE 140M, ULTRADUR, RASODUR, RASODUR MAXI, LEVELFAST or LEVELFAST S. Non-heating substrates with excessive humidity (max. 5%) must be first waterproofed with appropriate primers such as: PU series, EPOPRIMER or TRIX, depending on the absorbency of the surface. Heating substrates can be reinforced but not waterproofed (contact the Technical Department for more information). Anhydrite screeds should be sanded, dusted and primed according to the manufacturer's instructions. Lay the flooring to be fixed in the desired rooms on the substrate before installation. Thoroughly mix the two components in their correct catalysis ratio of 8.7:1.3 using a mechanical stirrer to create a paste that is homogeneous in color and appearance. To speed up the setting and installation times of the flooring, FASTER can be added to the 10 kg mixture of adhesive. When using the entire 100 ml container of FASTER, the product's pot life falls to about 30 mins under standard environmental conditions, resulting in a shorter final setting time. Of course, it is possible to use less or more than 100 ml of FASTER, to decrease the pot life in the desired amount (for more information, please contact our technical offices). Apply the adhesive on the substrate using an appropriately sized notched trowel, incorporating any residual surface dust. The flooring should be laid on top of the glue while it is still fresh, pressing it and massaging it immediately afterwards

from the center outwards to promote adhesion and to release any air bubbles. Repeat after about 2-3 hours. Rigid, warped or uneven flooring must be held pressed to the substrate using appropriate weights until the adhesive has completely set. Wait for the product to set, approximately 12 hours, before walking on the flooring.

OTHER INFORMATION

Various kinds of rubber, PVC and LVT are commercially available; it is therefore recommended to test the adhesive on the material in the event of uncertainty. Some resilient flooring may contain separating agents or paraffins; they should therefore be cleaned with SOLVENTE CH 500 or be sanded before installation. The application and gluing times indicated in the product features correspond to an ambient temperature of +20°C and a relative air humidity of 50%. The product should be stored at the same temperature as the desired room. For outdoor installation during hot weather, the flooring should be laid at the coolest time of the day to avoid the formation of bubbles. Avoid exposure to excessively high temperatures.

INSTRUCTIONS

FOR SAFETY AND DISPOSAL: Consult the relevant safety data sheet before using the product. Gloves are recommended during use. Ventilate the room during and after use. Follow all applicable safety regulations. Do not dispose of any residue in the ground, waterways or drains. To dispose of the product and other waste deriving from the activity, adhere closely to the provisions of Legislative Decree no. 152/2006 and subsequent amendments and additions of the Consolidated Environmental Act (Testo Unico Ambientale). For further information, please contact our Technical Assistance Department. The content of this sheet integrates and replaces the previous version, rendering it null and void.

WARNINGS: The data provided in this data sheet reflects our best theoretical and practical knowledge. However, it is not possible for us to consider every detail, therefore this information should not be considered as binding. In the event of any doubt, please contact our technical offices.